

Specification Advice

For laying
SureSet flexible resin bound aggregate surfacing



Permeable Access Roads (SUDS) cars and occasional delivery vehicles

Water Flow

Fine sand lightly cast onto uncured surface



The typical depth of SureSet Permeable Paving surface:

A SureSet aggregate size of 6mm requires a 20mm depth layer of SureSet
A SureSet aggregate size of 10mm requires a 26mm depth layer of SureSet



Binder Course

A 40mm minimum depth of AC 14mm open surf asphalt concrete, max 125 pen to BS EN 13108:2006 (Bituminous Macadam)



Road Base

A 100mm minimum depth AC 20mm open graded surf asphalt concrete max 125 pen to BS EN 13108:2006 (Bituminous Macadam)



OR

80-90mm SureSet equivalent base laid in compacted layers.

Sub-base

A 300-500mm minimum depth of well compacted Type 3 granular sub-base to SHW clause 805 or 4/40mm graded crushed concrete aggregate to EN12620 or locally available secondary or recycled aggregates which comply with the above specification blinded with 2/6.3mm graded crushed concrete aggregate to EN12620.

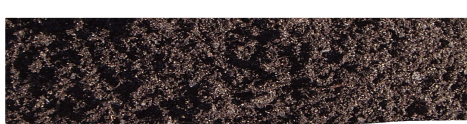


An impermeable membrane to convey water to infiltration/storage system etc. (optional)



OR

A geo-textile membrane to prevent upward migration of fine soil particles may be required (optional)

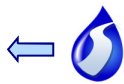


Capping Layer if required in one or more layers. (please see notes below)



Sub-grade

No infiltration



OR

Full infiltration

Full infiltration - water returns to ground surface

No infiltration - impermeable membrane used to carry water off to storage tank for either storage or controlled release

Purpose

To provide a permeable, seamless and durable surface where water conservation is an issue.

Advantages

Permeable, minimum number of joints, easy to maintain and quick drying.

Notes

Areas that may be trafficked by heavy vehicles should have structural layers designed according to Highways Agency requirements.

If water recycling is a requirement then an impermeable membrane should be used in conjunction with a water harvesting system

If rainfall is required to infiltrate the sub-grade, then a permeable geo-textile membrane should be used (if sub-grade conditions allow).

If a plastic or silty sub-grade is present, then a capping layer should be used in accordance with HA Design Manual for Roads and Bridges HD 25

Total sub-base thickness will be dictated by expected loading/required water storage capacity/sub-grade strength.

The maximum deviation of the binder course should not exceed 3mm under a 1 metre straight edge.

This specification is based on normal good practice for flexible surfacing and does not absolve the specifier from designing a construction suitable for the expected traffic and ground conditions pertaining on a given site.

Specification Advice

QRSA7179

Permeable Access Roads (SUDS)



Permeable Access Roads (SUDS) cars and occasional delivery vehicles



The details in this specification are intended only as a guide in specifying SureSet products, actual designs should be developed by the project designers taking into account the specific circumstances of the intended application. SureSet assumes no responsibility for improper reliance upon or misuse of the data herein. Product design and specification are subject to change without further notice.

If you have any enquiries call our technical sales team on: +44 (0)1985 841180